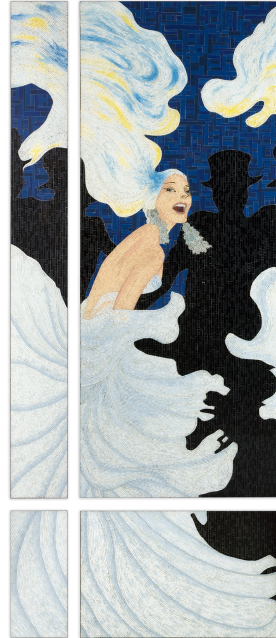




46-0289

Parisian (46-0289)

Imagine a jigsaw consisting of thousands of hand-crafted pieces, each cut to size and painted in its own unique shade of color ... that is the magnitude of the work and skill required to create these masterpieces which take over two months to complete. Christopher Guy's admiration for the female form can be seen throughout his work, and here he is paying homage to feminine sensuality through these Parisian dancers. The mosaics capture the gaiety, passion and energy of this great city's theatrical nightlife.



FINISHING OPTIONS

N/A

SIZE

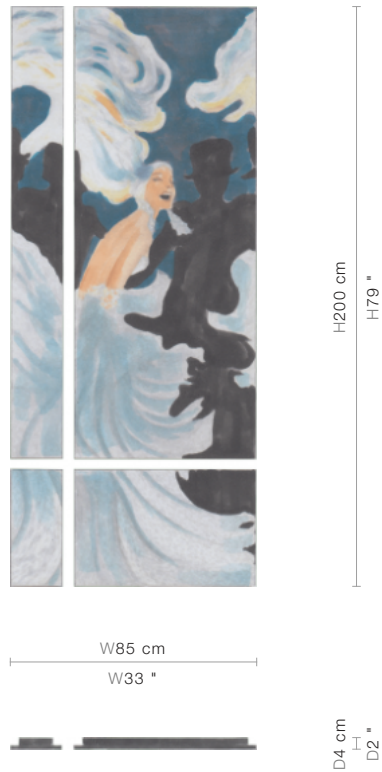
W85 x D4 x H200 cm / W33 x D2 x H79 inches

PRICE LIST: PRICE

CODE	SIZE	PRICE
46-0289	W85 x D4 x H200 cm / W33 x D2 x H79 inches	INQUIRE



BLUEPRINTS



PACKAGING, WEIGHTS & MEASURES

DIMENSION	VOLUME	WEIGHT	PACKAGE TYPE	NOTES
<i>(cm)</i>				
W221 x D30 x H114 cm	0.76 m ³	70 kg	Crate	AF
W221 x D17 x H105 cm	0.39 m ³	56 kg	Crate	FCL
W221 x D17 x H105 cm	0.39 m ³	66 kg	Crate	LCL
W221 x D17 x H105 cm	0.39 m ³	56 kg	Crate	SA
<i>(inches)</i>				
W87 x D12 x H45 "	26.83 ft ³	154 lbs	Crate	AF
W87 x D7 x H41 "	13.77 ft ³	123.2 lbs	Crate	FCL
W87 x D7 x H41 "	13.77 ft ³	145.2 lbs	Crate	LCL
W87 x D7 x H41 "	13.77 ft ³	123.2 lbs	Crate	SA

Please note, the finishing and fabric colour references printed are purely indicative.

The blueprints are for representation only, and not to a particular scale.

Christopher Guy reserves the right to modify the product information as required, without any prior notice.

Copyright © 2000 - 2024 Christopher Guy. All Rights Reserved.

(Downloaded on 25 April 2024)